



**Quick Guide**

Ver. 1.1  
Release date: X 2024  
Soft: V2.117.893



Producer:  
Engo Controls sp. z o.o. sp. k.  
Rolna 4 St.  
43-262 Kobielice  
Poland

[www.engocontrols.com](http://www.engocontrols.com)

**Technical specification**

Power supply	110-240V AC (E27 bulb socket)
Communication	Wi-Fi 2.4GHz
Resolution	4Mpx 2560*1440P
Local storage	Micro SD(Max 256GB)- card not included Minimum requirements of a microSDXC card -full HD speed class - C10/U1/V10
Dimmension [mm]	Ø82 x 169

**Product Compliance**

This product complies with the following EU Directives:  
2014/53/EU, 2011/65/EU.

**Introduction**

The camera works with the Engo Smart app and the TUYA cloud. The camera offers excellent image quality in 4MP (2560x1440) FHD resolution. The device detects motion and human silhouettes, and the motion tracking function allows it to automatically follow moving objects within a 355° field of view. It features two-way audio communication with noise reduction. Simple installation in any lamp with an E27 thread make the camera fit perfectly into any interior.

**Product features**

- FHD** 4Mpx 2560\*1440P
- 2-way audio
- Motion detection
- Move tracking
- Infrared (IR) up to a distance of 10m
- Pan-tilt-zoom (PTZ), horizontal 355°, vertical 110°
- Angle of lance 108°
- Electronic nanny function
- possibility to create automation and scenarios in the ENGO Smart application

**Safety information**

Use in accordance with national and EU regulations. Use the device only as intended, keeping it in a dry condition. The product is for indoor use only. Please read the entire manual, before installation or use.

**Camera description**



1. E27 thread
2. LED diode
3. Camera lens
4. Microphone
5. IR illumination
6. Loudspeaker
7. Micro SD slot
8. Reset button

**Inserting a memory card**

Slide the moving part of the camera in the direction indicated by the arrow. Slide the card into the micro SD card slot until you hear a click.



**Camera assembly**

**ATTENTION:**

Screw the camera into the holder by rotating only the stationary part of the unit to avoid damaging the head.



**Installation of the camera in the app**

Make sure your router is within range of your smartphone. Make sure you are connected to the Internet. This will reduce the pairing time of the device.

**STEP1 - DOWNLAD ENGO SMART APP**

Download the ENGO Smart app from Google Play or Apple App Store and install it on your smartphone.



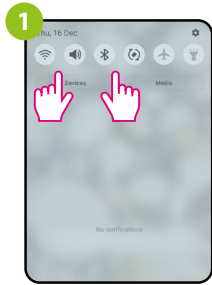
**STEP 2 - REGISTER THE NEW ACCOUNT**

To register a new account, please follow the steps below:

1. Click „Sign Up“ to create new account.
2. Enter your e-mail address to which the verification code will be sent.
3. Enter the verification code received in the email. Remember that you only have 60 seconds to enter the code!
4. Then set the login password.

### STEP 3A - CONNECT CAMERA TO WI-FI- Connection via Bluetooth

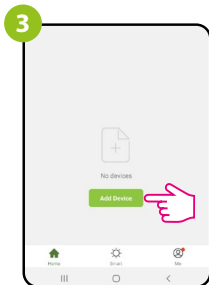
After installing the app and creating an account:



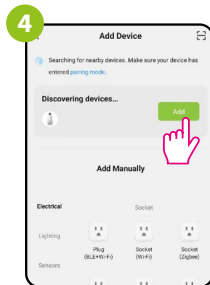
On your mobile device, make sure the ENGO Smart has access to permissions (Location, Bluetooth, Nearby devices). Then turn on Bluetooth and Location. Connect to 2.4GHz Wi-Fi network to which you want to assign the device.



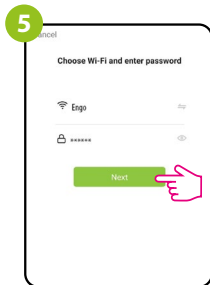
Make sure the camera is powered on. Then press and hold the button on the back of the camera for approximately 5 seconds, until the beep. The LED on the front of the unit will then start flashing. The pairing mode is enabled.



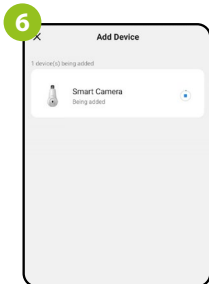
In the app, select: „Add Device“.



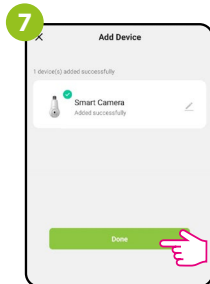
After finding the camera, go „Add“



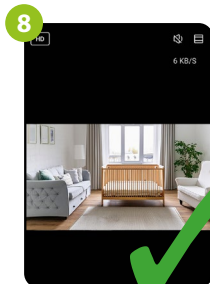
Select the Wi-Fi network in which the camera will operate and enter the password of this network.



Wait for the app to configure the device with the selected Wi-Fi network.



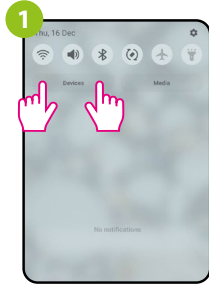
Go „DONE“.



The camera has been installed and displays the main interface.

### STEP 3B - CONNECT CAMERA TO WI-FI- Connection via QR Code

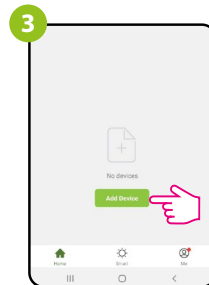
After installing the app and creating an account:



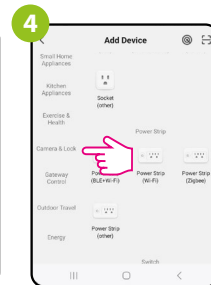
On your mobile device, make sure the ENGO Smart has access to permissions (Location, Bluetooth, Nearby devices). Then turn on Bluetooth and Location. Connect to 2.4GHz Wi-Fi network to which you want to assign the device.



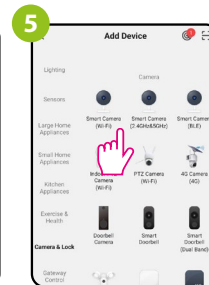
Make sure the camera is powered on. Then press and hold the button on the back of the camera for approximately 5 seconds, until the beep. The LED on the front of the unit will then start flashing. The pairing mode is enabled.



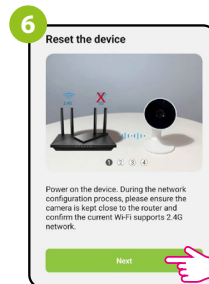
In the app, select: „Add Device“.



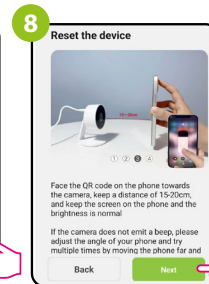
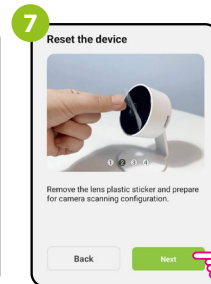
Select „Camera & Lock“.



Find and click on the Wi-Fi camera in the device list.



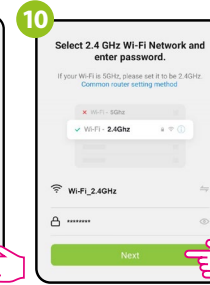
Follow the instructions displayed on the smartphone screen.



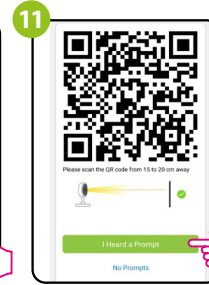
### STEP 3B - CONNECT CAMERA TO WI-FI- Connection via QR Code



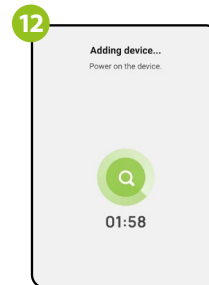
Then go „Next“.



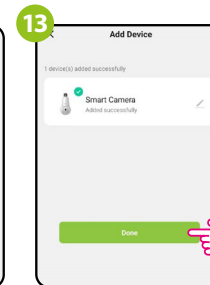
Select the Wi-Fi network in which the camera will operate and enter the password of this network.



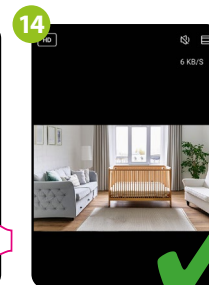
Point the camera at the QR code displayed in the app, click „I heard the sound“ after the beep.



Wait for the app to configure the device with the selected Wi-Fi network.



Go „DONE“.



The camera has been installed and displays the main interface.

### Factory reset

To restore the default settings of the camera, hold down the Reset button for about 5 seconds until a beep sounds. Then release the button. The camera will restart, restore the default (factory) settings and be ready to be added to the application again.

