



### Quick Guide

Ver. 1  
Date of issue: IX 2022



**Producer:**  
Engo Controls S.C.  
43-200 Pszczyna  
3E Górniośląska St.  
Poland

**Distributor:**  
QL CONTROLS Sp z o.o. Sp. k.  
43-262 Kobilce  
4 Rolna St.  
Poland

### Introduction

EDOORZB is a battery-operated magnetic sensor, compatible with the ZigBee 3.0 standard. A change in the state of the device automatically sends a signal to a ZigBee Internet gateway (Engo EGATEZB). It can be used to create rules for the operation of home appliances (scenes) and where you need information about the opening or closing of doors, windows, garage doors, etc.

Using the Engo Smart app, it is possible to create a relationship between the window opening sensor and the room temperature thermostat (e.g. if the window is opened, the heating or air conditioning is turned off). The opening is detected by the distance between the sensor and the magnet.

The product is designed for indoor use only.

The sensor must be combined with a universal ZigBee 3.0 gateway (Engo EGATEZB).

### Product Compliance

This product complies with the following EU Directives: 2014/53/EU, 2011/65/EU

### Technical Informations

Power supply	CR2450
Communication	ZigBee 3.0, 2.4GHz
Dimensions	72x42x16 mm

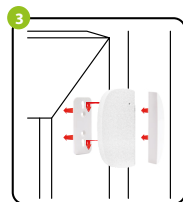
### EDOORZB installation



Remove the battery cover.



Remove protective film of the sensor.



Stick the sensor and magnet to the frame and sash of the door / window, no more than 5mm from each other.

### Explanation for LED indicator



LED indicates current status of the device

LED INDICATOR STATUS	DEVICE STATUS	DESCRIPTION
The <b>Green</b> LED flashes	The device is in pairing mode	This mode is triggered by long button press (reset button hold for 8 sec.).
Single flash of the <b>Green</b> LED	the device sends information to the app	Device is properly connected to the network and app can receive information from sensor.

### Installation of the door sensor in the app

Make sure your router is within range of your smartphone. Make sure you are connected to the Internet. This will reduce the pairing time of the device.

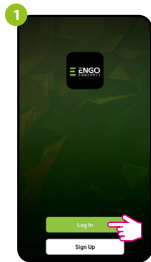
#### STEP 1 - DOWNLOAD ENGO SMART APP

Download the ENGO Smart app from Google Play or Apple App Store and install it on your smartphone.

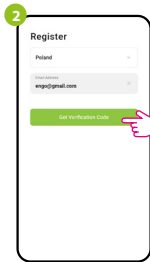


## STEP 2 - REGISTER THE NEW ACCOUNT

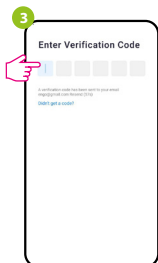
To register a new account, please follow the steps below:



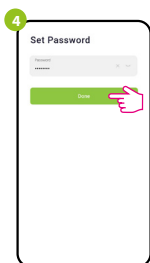
Click „Register“ to create new account.



Enter your e-mail address to which the verification code will be sent.



Enter the verification code received in the email. Remember that you only have 60 seconds to enter the code!



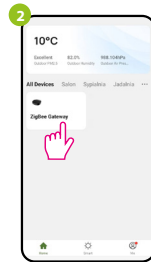
Then set the login password.

## STEP 3 - CONNECT THE SENSOR TO APP

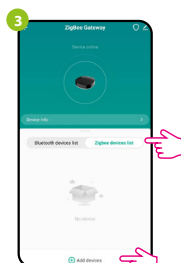
After installing the app and creating an account, install the ZigBee Gateway in accordance with the instructions attached to it, and then:



Using the PIN included, press and hold the RESET button for 8 seconds until the green LED starts flashing. The pairing mode is enabled.



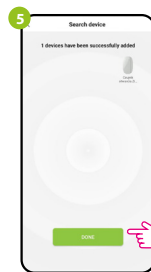
Enter the gateway interface.



Select „Zigbee devices list“ and go „Add devices“.



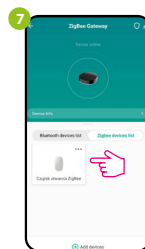
Then wait until the application finds the sensor.



After finding the device, go „Done“.



Name the device and click „Done“.



After successful pairing the device will appear on gateway's list of devices. Click on it to view the interface.



Window/door sensor is ready to work.

## Reset the sensor

To reset the device to factory settings, hold down the RESET button located at the bottom of the device (see picture) for approx. 8 seconds (use the PIN included in the set). The sensor will be removed from the ZigBee network and gateway memory. Device is ready to re-add it again.

