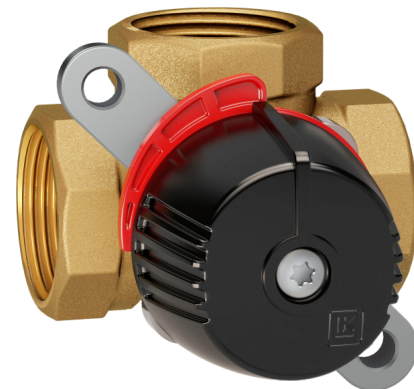


LK 840 ThermoMix® 2.0

- Low internal leakage
- Suitable for motorization
- Broad product range



Technical Data

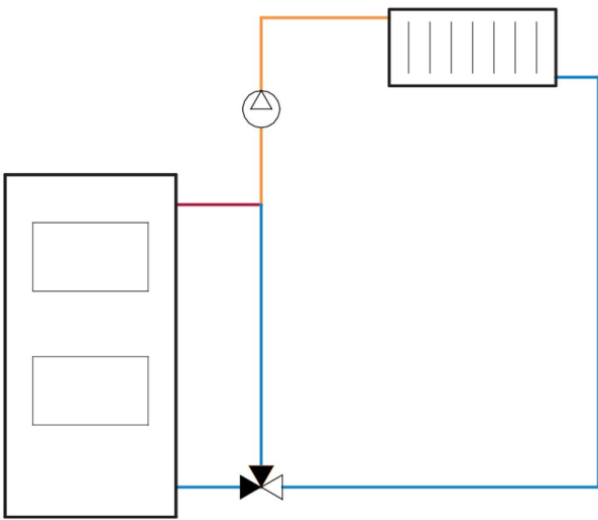
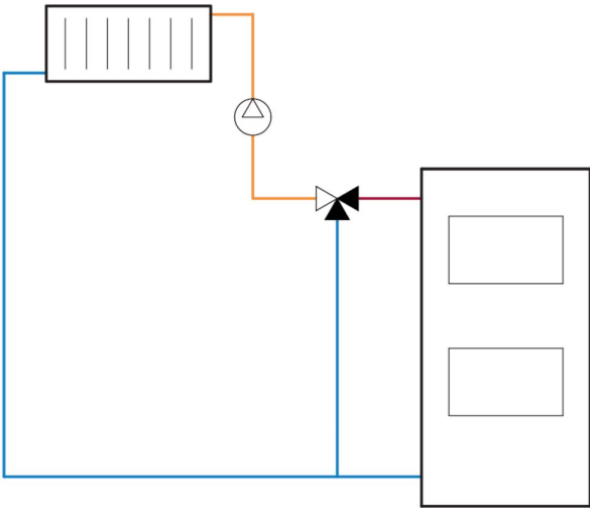
Working temperature:	Min. 5 °C/Max. 110 °C (120 °C briefly)
Ambient temperature:	Min. 5 °C/Max. 60 °C
Max. working pressure:	1.0 MPa (10 bar)
Max. differential pressure:	100 kPa (1 bar)
Leakage:	< 0,2% of Kvs at 100 kPa
Angle of rotation:	90°/360°
Torque:	< 1 Nm (DN15-32)* < 2,1-2,3 Nm (DN40-50)*
Media 1:	Water - Glycol mixture max. 50% Ethanol mixture max. 30%
Thread standard:	Rp - female thread, G - male thread
Material, valve body:	Brass EN 12165 CW617N
Material, internal cover:	PPS Composite
Material, external cover:	DN 15-32 Aluminium, DN 40-50 Composite
Material, slide/spindle:	Brass EN 12165 CW617N
Other data:	* Double torque if the valve is used diverting.
Material, sealing:	EPDM
Spindle sealing:	Two O-rings

LK 840 ThermoMix® 2.0 is a 3-way mixing valve which can be used as a mixing or diverting valve in heating systems. The valve is suitable for motorization and can be fitted with insulation. For more information, see the insulation data sheet.

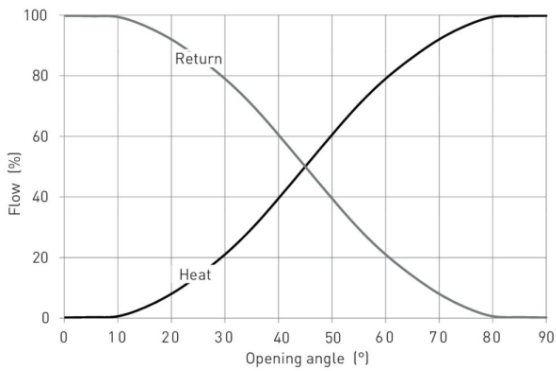
A compact design and a octagonal key grip gives an easier access and installation in tight spaces. The valve can be installed in any position and LK 840 ThermoMix® 2.0 can easily be adapted for right- or left-hand mounting.

The valve requires no maintenance but the installation should be checked regularly.

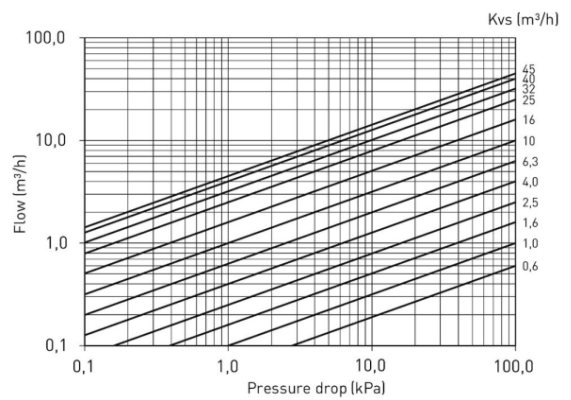




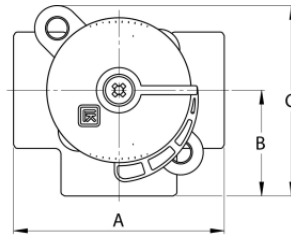
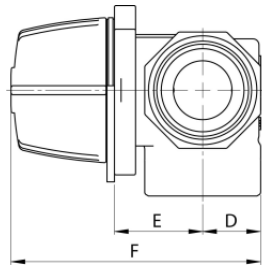
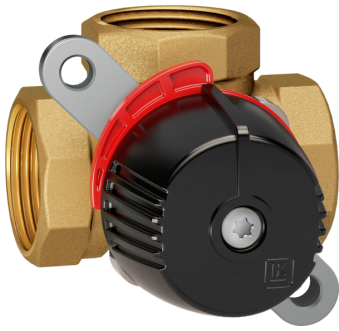
Valve Characteristics



CAPACITY DIAGRAM

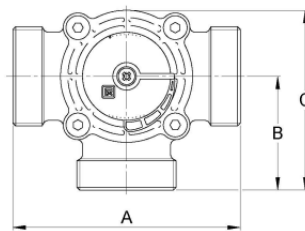
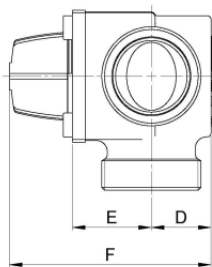
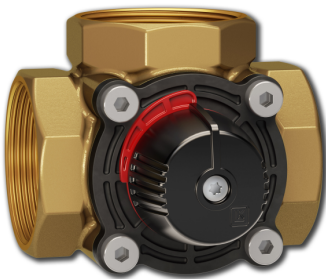


LK 840 2.0 - Female thread



Article	Dim.	Kvs m ³ /h	A mm	B mm	C mm	D mm	E mm	F mm	Weight (kg)
181908	F ½"	0,6	70	35	69	18	29	81	0.5
181909	F ½"	1,0	70	35	69	18	29	81	0.5
181910	F ½"	1,6	70	35	69	18	29	81	0.5
181911	F ½"	2,5	70	35	69	18	29	81	0.5
181912	F ¾"	4,0	70	35	69	18	29	81	0.5
181913	F ¾"	6,3	70	35	69	18	29	81	0.5
181914	F 1"	6,3	70	35	69	20	29	83	0.5
181915	F 1"	10,0	70	35	69	20	29	83	0.5
181916	F 1¼"	16,0	84	42	77	24	32	90	0.8

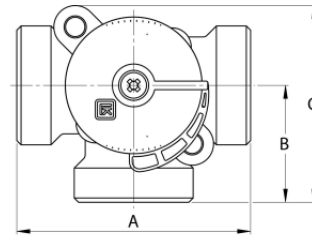
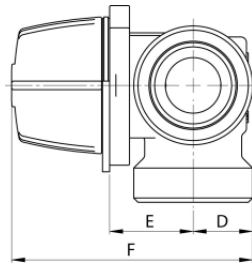
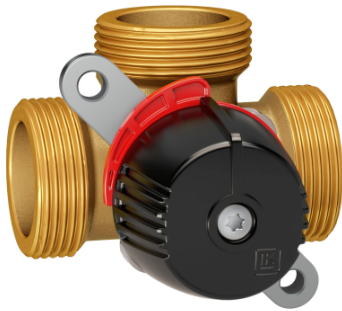
LK 840 2.0 - Female thread



Article	Dim.	Kvs m ³ /h	A mm	B mm	C mm	D mm	E mm	F mm	Weight (kg)
181917	F 1½"	25,0	106	53	88	33	43	110	1.4
181918	F 2"	40,0	106	53	88	33	43	110	1.6

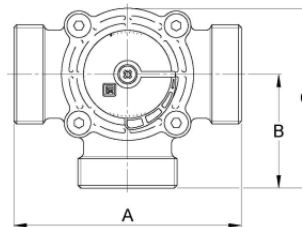
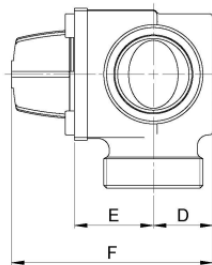
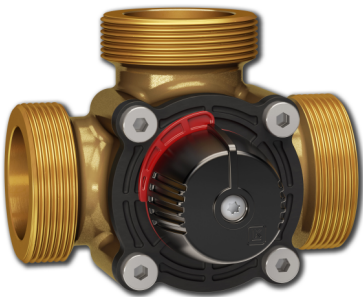


LK 840 2.0 - Male thread



Article	Dim.	Kvs m ³ /h	A mm	B mm	C mm	D mm	E mm	F mm	Weight (kg)
181919	M ¾"	2,5	80	40	74	18	29	81	0.6
181920	M 1"	4,0	80	40	74	18	29	81	0.6
181921	M 1"	6,3	80	40	74	18	29	81	0.6
181922	M 1¼"	10,0	82	41	75	20	29	83	0.6
181923	M 1½"	16,0	84	42	77	24	32	90	0.8

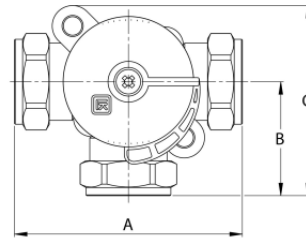
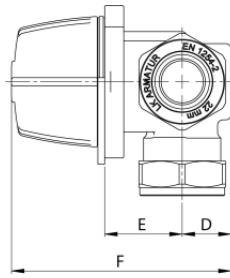
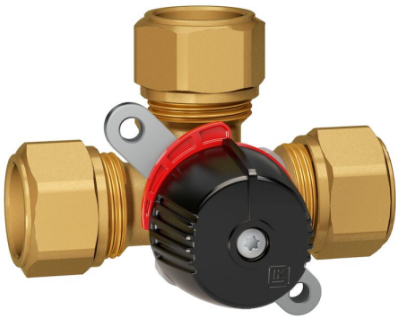
LK 840 2.0 - Male thread



Article	Dim.	Kvs m ³ /h	A mm	B mm	C mm	D mm	E mm	F mm	Weight (kg)
181924	M 2"	25,0	124	62	97	33	43	110	1.4
181925	M 2"	32,0	124	62	97	33	43	110	1.4
181926	M 2"	45,0	124	62	97	33	43	110	1.4



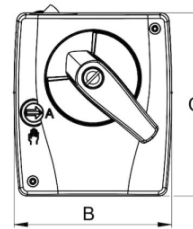
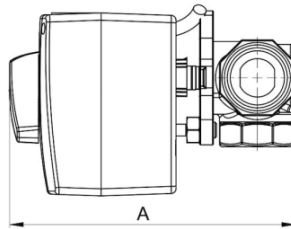
LK 840 2.0 - Compression Fitting



Article	Dim.	Kvs m ³ /h	A mm	B mm	C mm	D mm	E mm	F mm	Weight (kg)
181932	28 mm	6,3	120	60	94	18	29	81	0.7

Other dimensions on request.

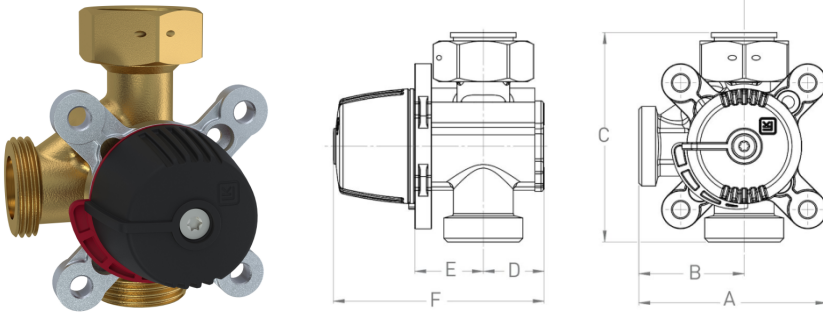
LK 840 Set - Female thread - LK 950 / LK 100 SmartComfort CT



Article	Type	Dim.	Kvs m ³ /h	A mm	B mm	C mm	Weight (kg)
182759	LK 950 (180759)	F ¾"	6,3	143	80	93	1.0
182760	LK 950 (180759)	F 1"	6,3	145	80	93	1.0
182761	LK 950 (180759)	F 1"	10,0	145	80	93	1.0
182762	LK 100 (181242)	F ¾"	6,3	149	84	97	1.0
182763	LK 100 (181242)	F 1"	10,0	151	84	97	1.0

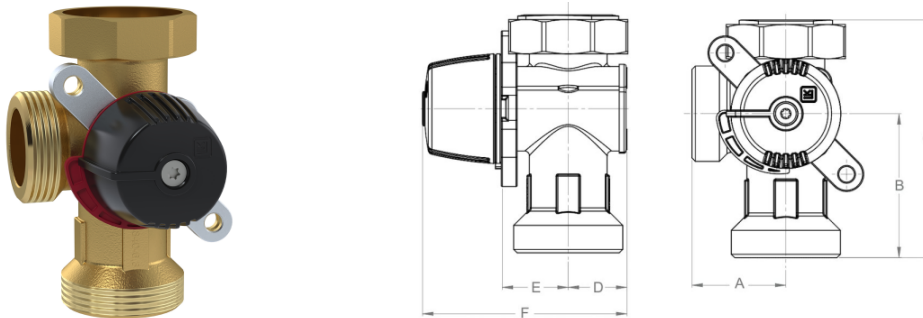


LK 850 HG - Male thread / Rotating nut



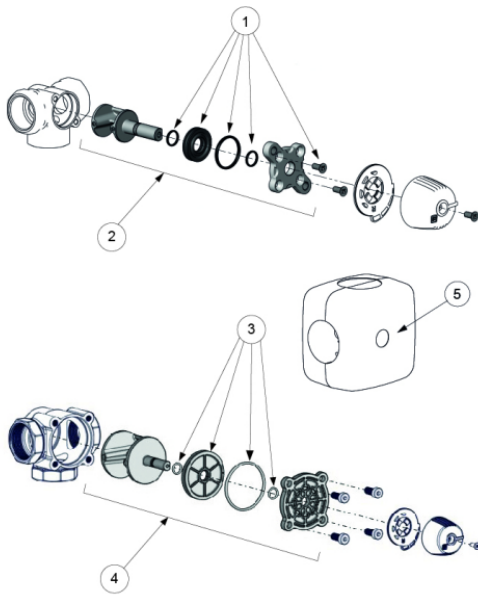
Article	Dim.	Kvs m ³ /h	A mm	B mm	C mm	D mm	E mm	F mm	Weight (kg)
182765	M 1" x M 1" x F 1" Rotating nut	6,3/10,0	78,5	44	88	25,4	28,6	88,1	0,65

LK 840 HG - Male thread / Rotating nut



Article	Dim.	Kvs m ³ /h	A mm	B mm	C mm	D mm	E mm	F mm	Weight (kg)
182766	M 1½" x M 1¼" x F 1½" Rotating nut	6,3	41	63	104	25,6	28,8	89	0,7
182767	M 1½" x M 1¼" x F 1½" Rotating nut	10,0	41	63	104	25,6	28,8	89	0,7

Accessories & Spare parts



Article no.	Article	Position
187187	Sealing kit LK 840/841 DN 15-20	1
187188	Sealing kit LK 840/841 DN 25	1
187197	Sealing kit 840/841 2.0, DN 32	1
187190	Repair kit LK 840 DN 15-20	2
187191	Repair kit 840 DN 25	2
187192	Repair kit LK 840 DN 32	2
187189	Sealing kit 840/841 2.0, DN 40-50	3
187193	Repair kit LK 840 DN 40-50	4
187107	Insulation, DN 15-20	5
187108	Insulation, DN 25-32	5