



Efficiency and reliability, every day!



BUFFER STORAGE TANKS

25 - 120 Lt

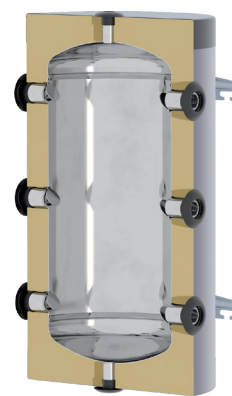
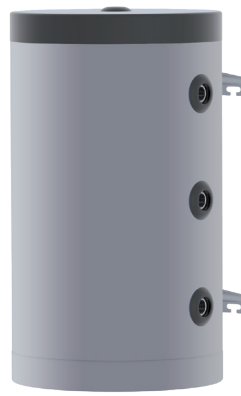


TECHNICAL SPECIFICATIONS

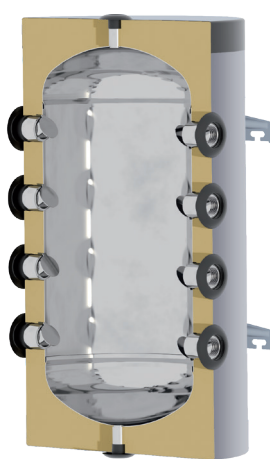
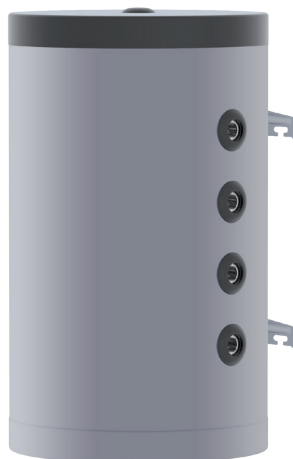
| MODEL | | 25Lt | 40Lt | 50lt | 80lt | 100lt | 120lt |
|----------------------------------|-----|-----------------------|------|------|-----------|-------|-------|
| | | Ø430-Ø320 | | | Ø490-Ø390 | | |
| Capacity | Lt | 25 | 40 | 50 | 80 | 100 | 120 |
| Weight empty | kg | 11 | 12 | 15 | 20 | 22 | 24 |
| Insulation Expanded polyurethane | mm | 55 | | | 50 | | |
| Heat Losses ΔT 45K | kW | | 34 | 38 | 45 | 51 | 58 |
| Energy Class | | B | | | | | |
| Test pressure | bar | 4,5 | | | | | |
| Max. Operational pressure | bar | 3 | | | | | |
| Max. Operational temperature | °C | 95 | | | | | |
| Internal tank material | | Carbon Steel \ Enamel | | | | | |



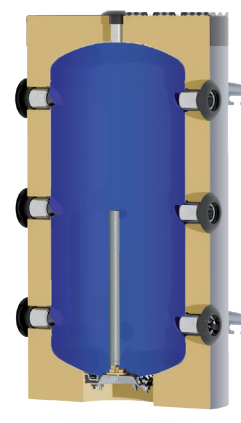
25-40lt 4-PIPE



50lt 6-PIPE

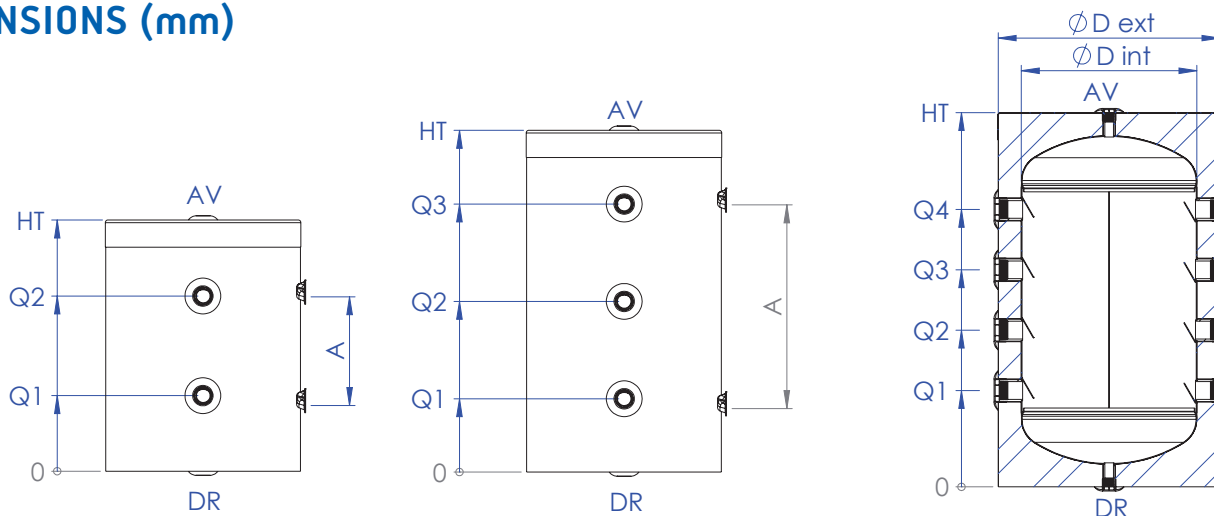


80 - 120lt 8-PIPE

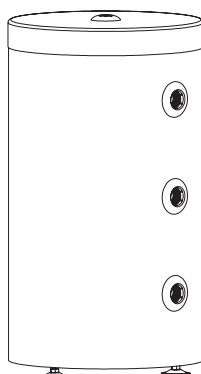
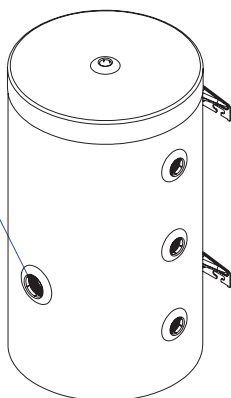


ENAMELED (OPTIONAL)

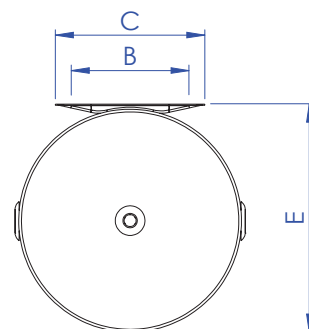
DIMENSIONS (mm)



Optional Heating Element



Optional Floor Standing



| DIAMETER | Lt | Q1 | Q2 | Q3 | Q4 | HT | D int | D ext | A | E | B | C |
|-----------|-----|-----|-----|-----|-----|------|-------|-------|-----|-----|-----|-----|
| Ø430-Ø320 | 25 | 167 | 287 | - | - | 455 | 320 | 430 | 120 | 443 | 260 | 330 |
| | 40 | 167 | 387 | - | - | 555 | 320 | 430 | 240 | 443 | 260 | 330 |
| | 50 | 162 | 377 | 592 | - | 755 | 320 | 430 | 450 | 443 | 260 | 330 |
| Ø490-Ø390 | 80 | 214 | 346 | 480 | 613 | 827 | 390 | 490 | 400 | 503 | 260 | 330 |
| | 100 | 214 | 394 | 574 | 754 | 967 | 390 | 490 | 540 | 503 | 260 | 330 |
| | 120 | 214 | 444 | 674 | 904 | 1119 | 390 | 490 | 690 | 503 | 260 | 330 |

| | | 25lt | 40lt | 50lt | 80lt | 100lt | 120lt |
|-----------------|------|--------|--------|--------|------------|------------|------------|
| Thermo Level | Q1-4 | F 1" | F 1" | F 1" | F 1 - 1/4" | F 1 - 1/4" | F 1 - 1/4" |
| Air Ventilation | AV | F 1/2" | F 1/2" | F 1/2" | F 1/2" | F 1/2" | F 1/2" |
| Draining | DR | F 1/2" | F 1/2" | F 1/2" | F 1/2" | F 1/2" | F 1/2" |